

Bernhard Hemmer, MD, Professor of NL, Chair

The chair's office

Email: keck@lrz.tum.de
Phone: +49 (0)89 4140 4601/02

inpatient admissions

+49 (0)89 4140 - 4631

outpatient clinics (OC)

OC registration desk: +49 (0)89 4140 - 4630
8 - 10 am
1 - 3 pm (Friday 2 pm)

OC for patients with private health insurance

Monday - Friday: 9 - 12 am
and by arrangement
appointments: +49 (0)89 4140 - 4601/02

OC for multiple sclerosis (MS)

Monday - Friday
appointments: +49 (0)89 4140 - 4630

OC for movement disorders and botulinum toxin therapy

Monday - Friday: 9 am - 4 pm
appointments: +49 (0)89 4140 - 4630

OC for Parkinson's disease

Monday, Wednesday, Friday
appointments: +49 (0)89 4140 - 4630

OC for Restless Legs Syndrome (RLS)

appointments: +49 (0)89 4140 - 4630

OC for Neuro-Oncology

appointments: +49 (0)89 4140 - 4630

OC for spasticity management and intrathecal baclofen therapy (IBT)

Thursday: 9 - 12 am
appointments: +49 (0)89 4140 - 4643

OC for Huntington's disease

by arrangement +49 (0)89 4140 - 4606

OC for Epilepsy

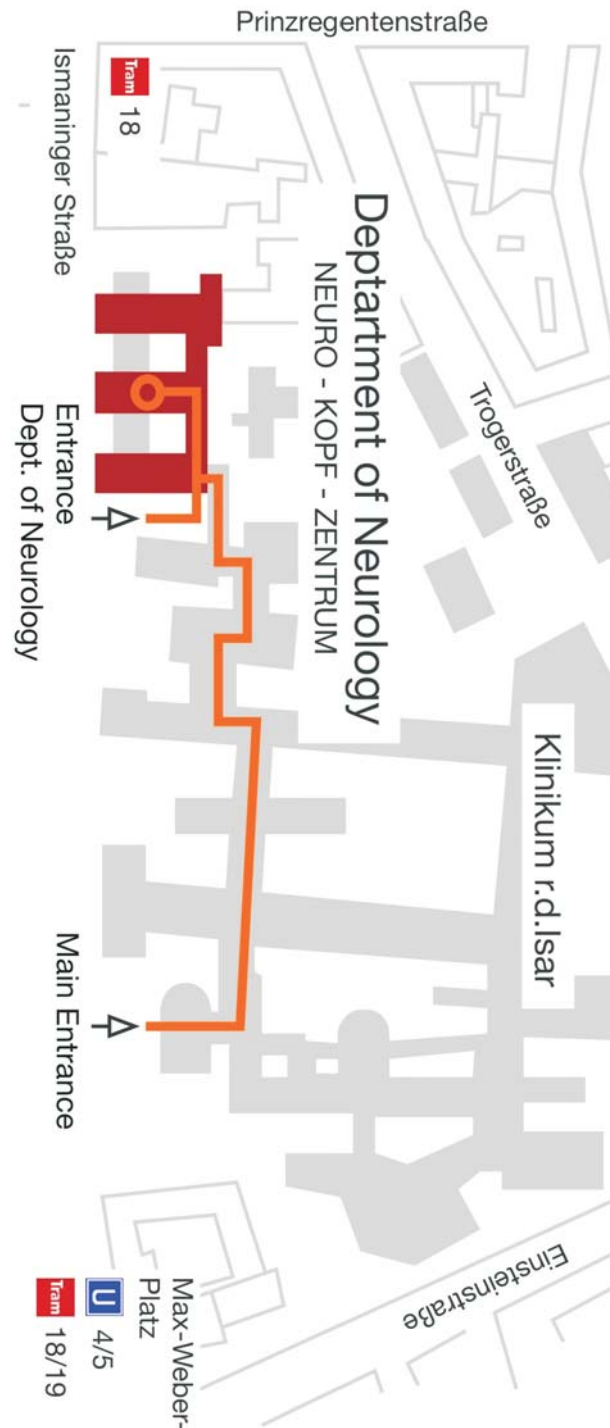
Monday and Wednesday: 9 - 12 am
appointments: +49 (0)89 4140 - 4630

OC for cerebrovascular disorders

appointments: +49 (0)89 4140 - 4630

OC for pain management

appointments: +49 (0)89 4140 - 4613



Department of Neurology

Maps and floor plans
Information for patients

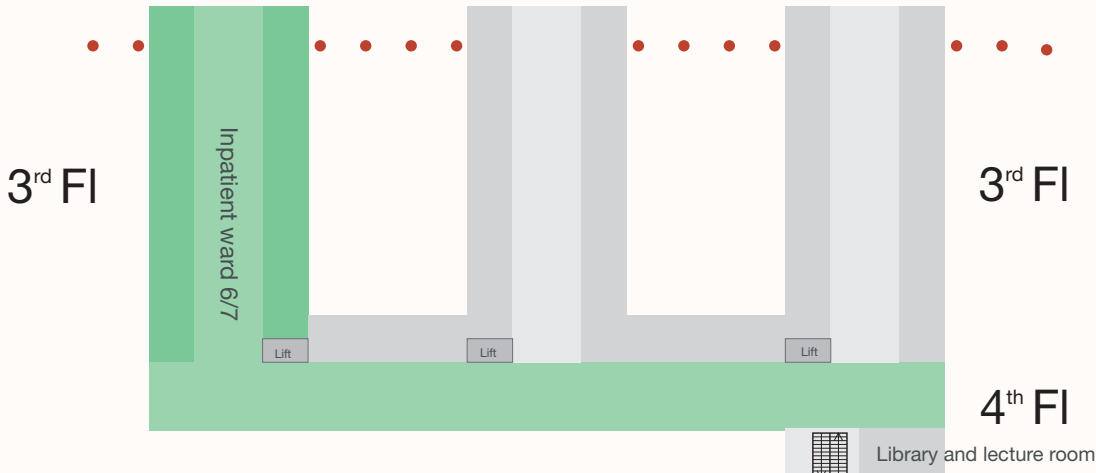
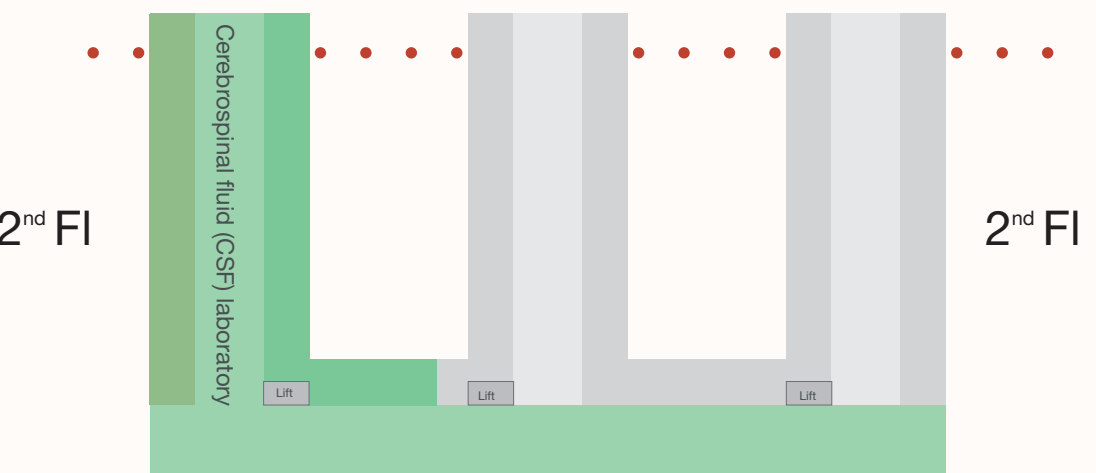
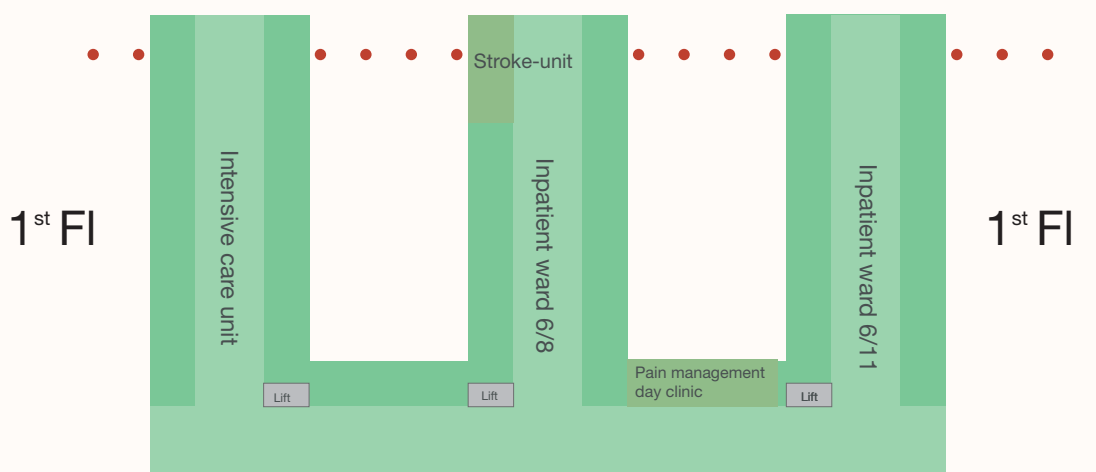
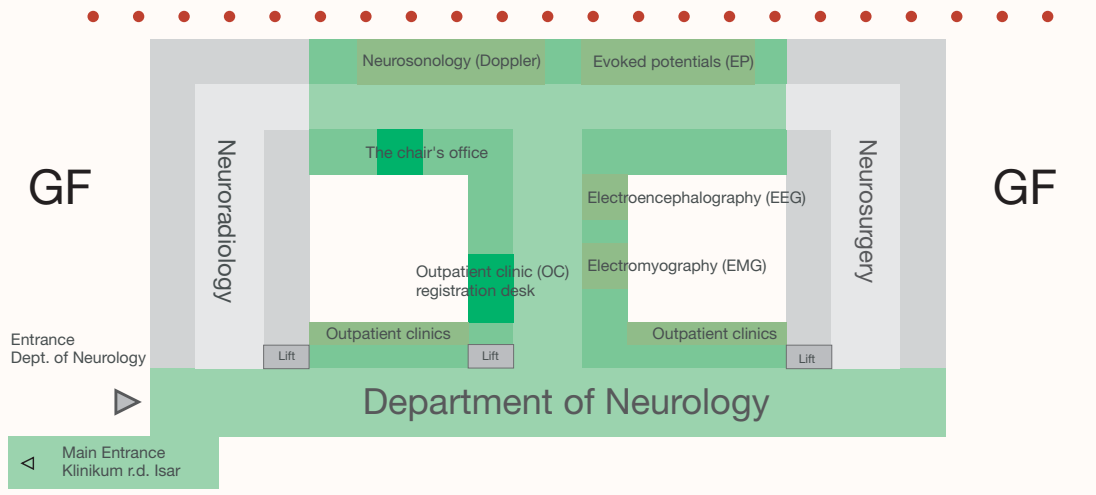


Foto: Aif

Klinikum rechts der Isar
Technische Universität München



Ismaninger Straße 22, 81675 München



Lift